

Digital Restoration of distorted Mural images

Pulak Purkait and Bhabatosh Chanda
Indian Statistical Institute
{pulak_r, chanda}@isical.ac.in

I. SOME RESULTS OF TEXTURE GENERATION TECHNIQUE

Input Texture I



Synthesized Texture



Input Texture II



Synthesized Texture



Input Texture III

Synthesized Texture



Input Texture IV

Synthesized Texture



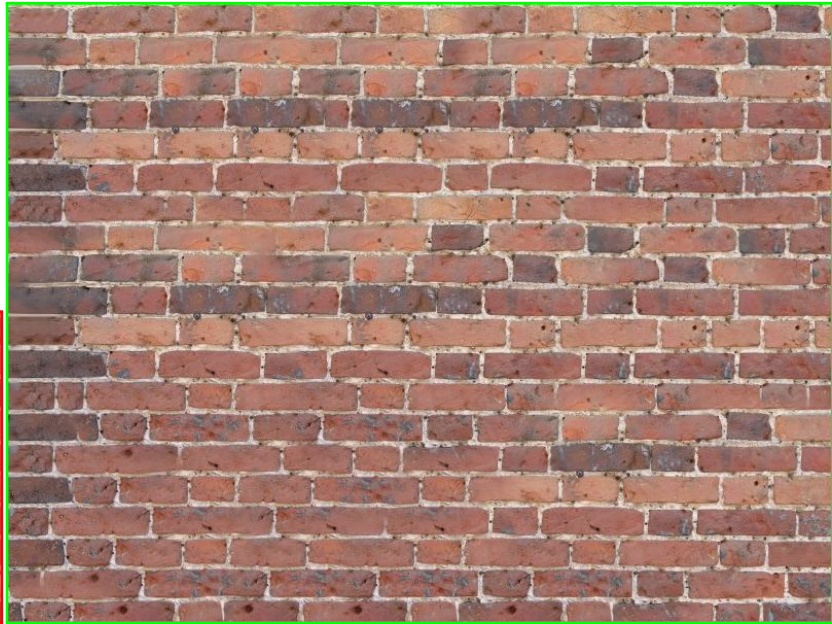
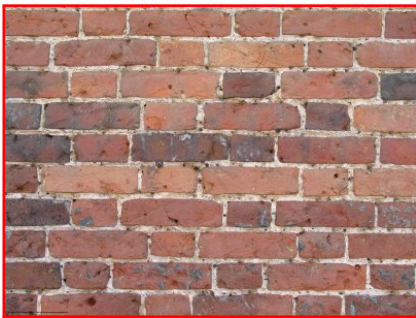
Input Texture V

Synthesized Texture



Input Texture VI

Synthesized Texture



A. *Painting Texture Synthesis*

Input Texture VII



Synthesized Texture



Input Texture VIII



Synthesized Texture



Input Texture IX



Synthesized Texture



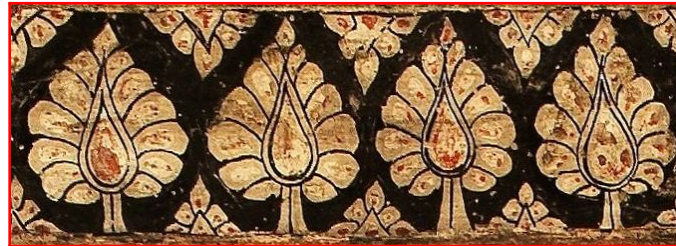
Input Texture X



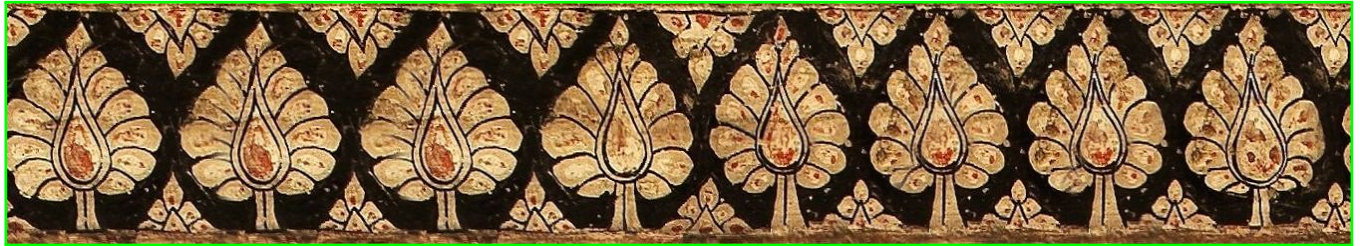
Synthesized Texture



Input Texture XI



Synthesized Texture



Input Texture XII



Synthesized Texture



II. RESULTS OF PROPOSED EDGE-SHARPENING ANISOTROPIC DIFFUSION

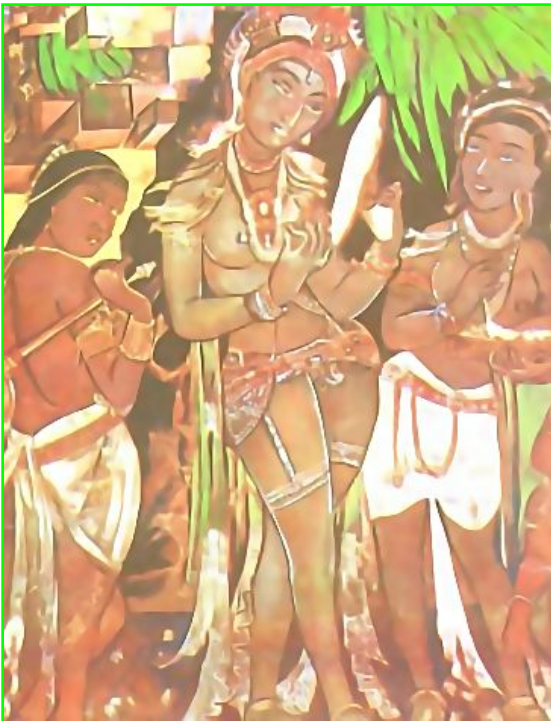
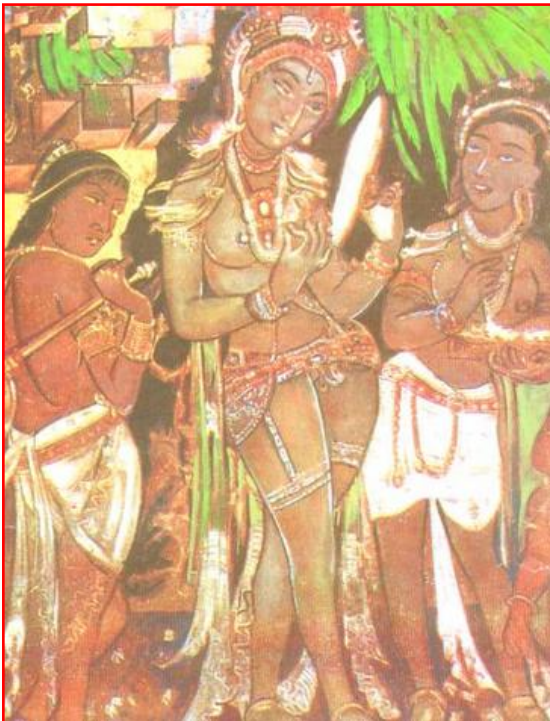
Mural Painting I

Digital Restoration Results



Mural Painting II

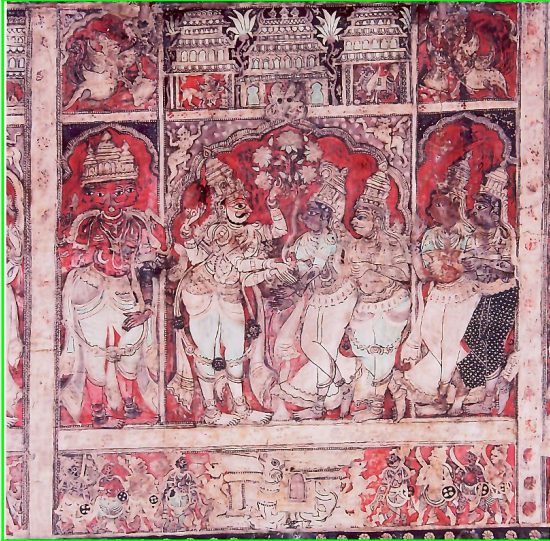
Digital Restoration Results



Mural Painting III



Digital Restoration Results



Mural Painting IV



Digital Restoration Results



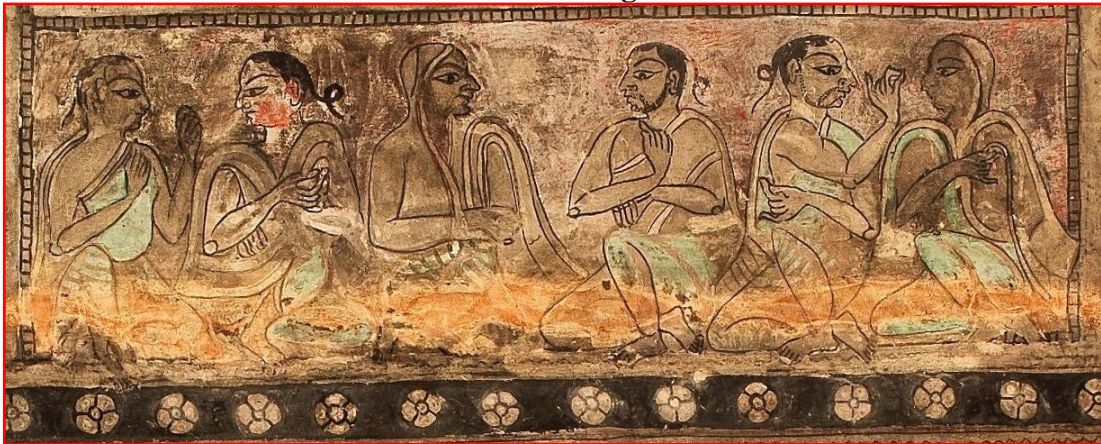
Mural Painting V



Digital Restoration Results



Mural Painting VI

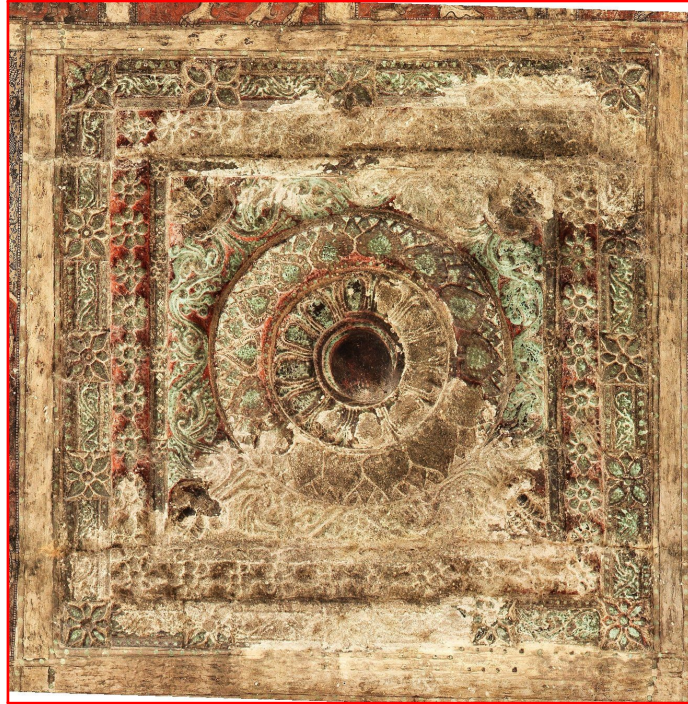


Digital Restoration Results



III. RESULTS USING PROPOSED RESTORATION TECHNIQUE

Original Mural Painting I

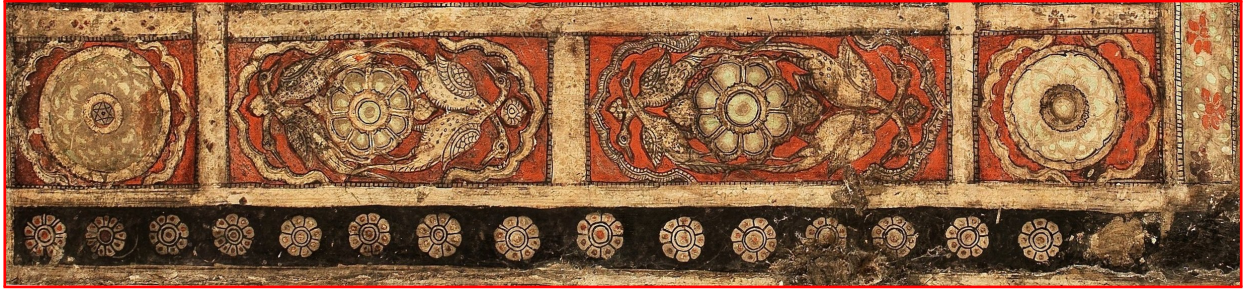


Digital Restoration Results



A. In this example source texture is selected from different image

Source Texture Image



Original Mural Painting II



Marked Region



Digital Restoration Results



B. Other examples

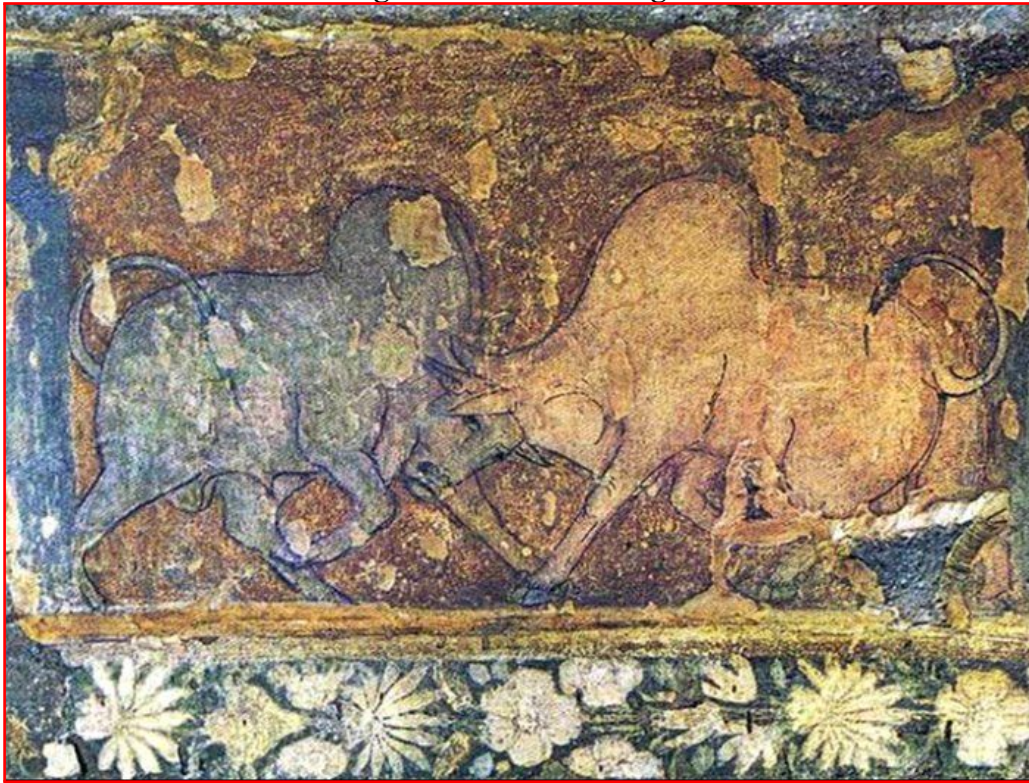
Original Mural Painting III



Digital Restoration Results



Original Mural Painting IV



Digital Restoration Results

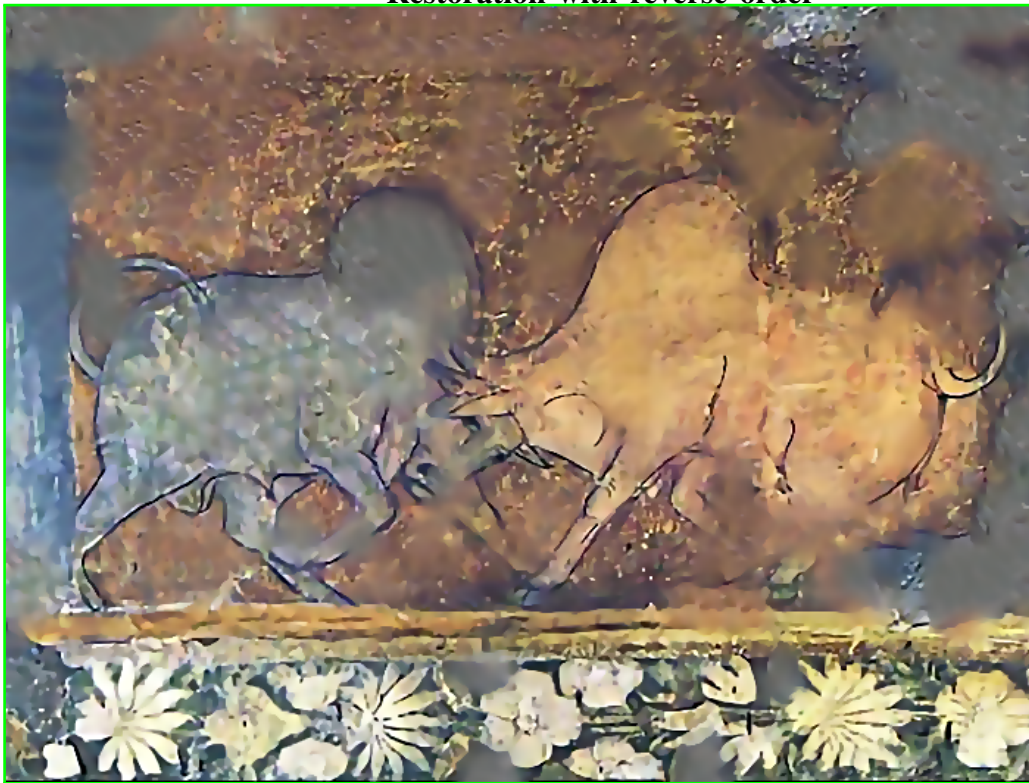


C. Mural Restoration in reverse order (First diffusion and then completion)

Restoration with the correct order

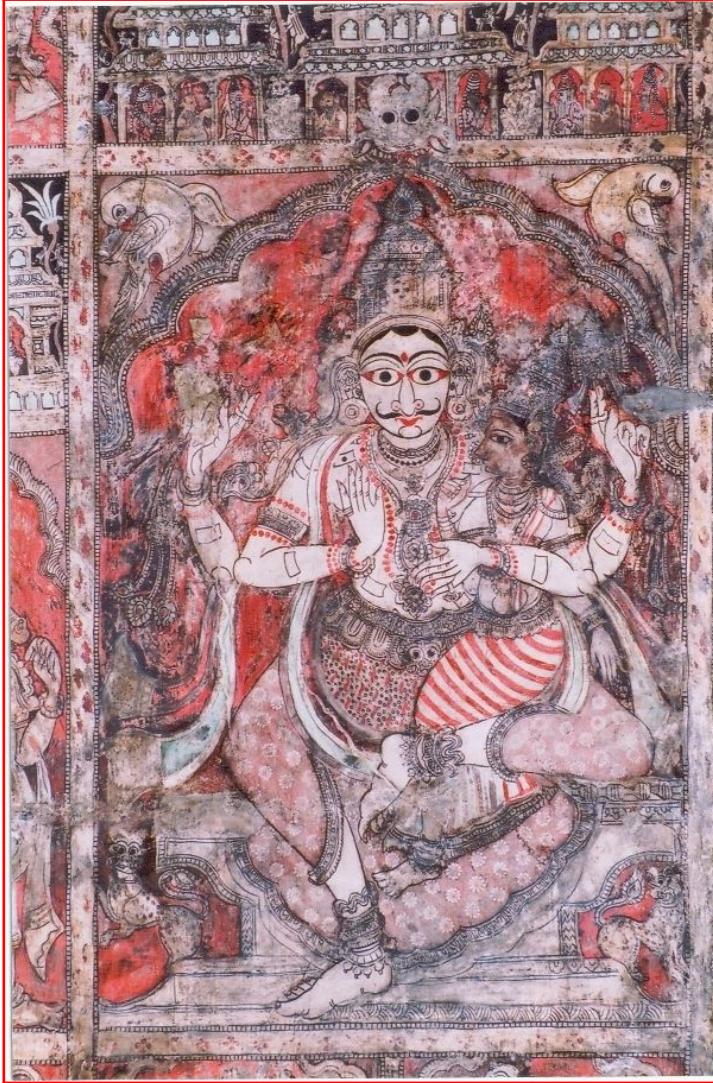


Restoration with reverse order



D. Edge Enhancement Diffusion Comparison

Original Mural Painting V



Preona-Malik anisotropic diffusion [21]



Edge Enhancement Diffusion Comparison

**Rotation optimized
coherence-enhancing Diffusion [28]**

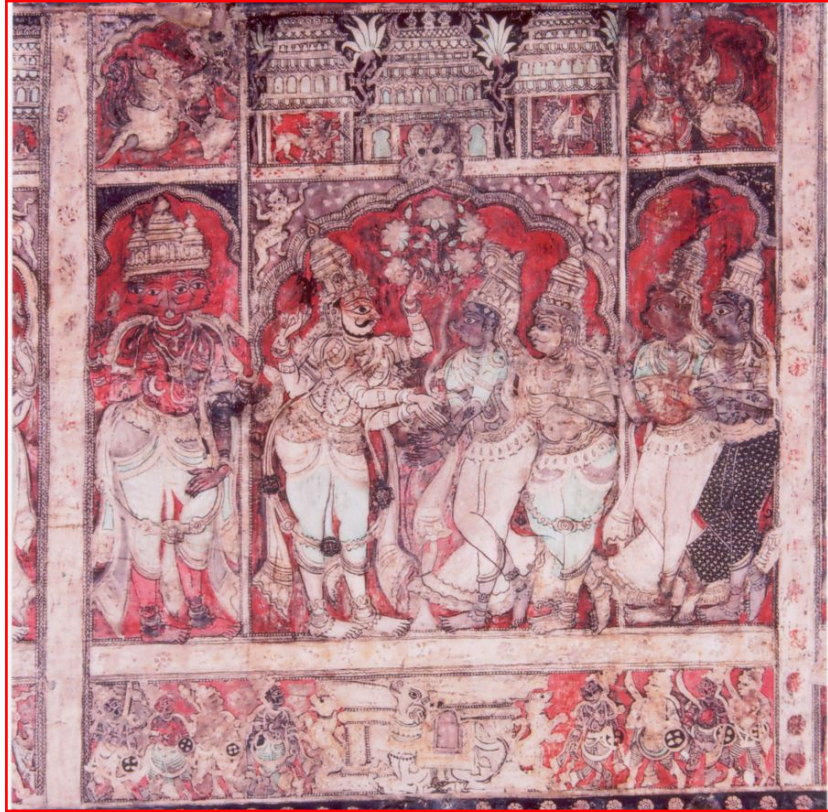


**Proposed patch-based
edge-enhancing diffusion**



Edge Enhancement Diffusion Comparison

Original Mural Painting VI



Preona-Malik anisotropic diffusion [21]



**Rotation optimized
coherence-enhancing Diffusion [28]**



**Proposed patch-based
edge-enhancing diffusion**

